



SANsurfer®

SANbox™ Fibre Channel
Switch Configuration and
Management Application

Switch
Manager™



As part of a total hardware/software SAN solution, SANsurfer Switch Manager is a comprehensive application for quickly and easily configuring and managing QLogic SANbox Fibre Channel (FC) switches used in storage area networks (SANs). SANsurfer Switch Manager features a point-and-click GUI that takes the complexity out of installing, configuring and managing QLogic switches and their attached devices, while helping eliminate common errors. SANsurfer Switch Manager provides local management as well as dynamic remote management of one or more SAN Fabrics via a single point of access.

• **Simplify switch configuration and management**

- Single, integrated, intelligent GUI-based management application for all QLogic SANbox5200 and SANbox2 switches
- One look, one feel, one menu/logic structure for managing all QLogic devices in SAN (both switches and HBAs)

• **Maximize IT productivity**

- Wizard based Installation and Zoning capabilities
- Non-disruptive upgrades and activation of switch firmware
- Drag-and-drop zoning with cross-checks to eliminate common switch configuration issues
- Advanced end-to-end diagnostics—loopback and read/write buffer tests

• **Improve network efficiency and productivity**

- Load balancing
- Failover functionality (complies with QLogic SPIFFI specification)

• **Ease of integration**

- Complementary to your existing third-party SAN management applications
- Broad OS support, providing the flexibility to operate within various OS environments: Windows, Solaris and Linux

- Simplify switch configuration and management
- Non-disruptive upgrade and activation of switch firmware
- Configuration, Zoning and Extended Distance Wizard tools make setup and use easy even for the novice
- Zoning via drag-and-drop operation with cross-checks for common configuration problems
- Fabric Tracker maintains a record of all devices in the SAN

- Save/restore switch configurations for easy upgrades with selective restoration
- User preferences for customized fabric features
- Password security for secure access control
- Optional account expiration setting for additional security
- Context-specific online help for all dialog boxes
- In-band Fibre Channel and/or out-of-band Ethernet or serial access through SANbox5200 & SANbox2 switches

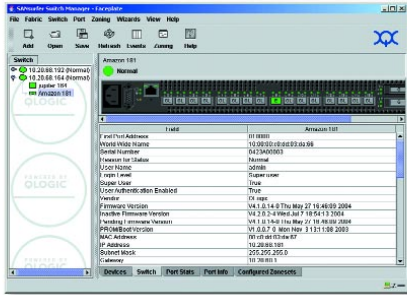
- Graphical fabric tree display
- Fabric, switch and port views
- Easy switch identification with beacon setting
- Administration and configuration of the SAN fabric, fabric switches, and individual ports
- IP address display of connected non-QLogic switches
- Compatible with all QLogic SANbox5200 and SANbox 2 switches
- Auto-detection of port transmission speed

SANsurfer Switch Manager is a uniform GUI with same look, feel and menu/logic structure as every management application in QLogic's SANsurfer Management Suite 4.0 (SMS) software. That's a big improvement over other device management solutions that require you to master a number of separate applications and utilities to configure and manage switches and HBAs. In addition, a Command Line Interface is available for managing SANbox5200 and SANbox2 switches.

management applications. Seamless integration is assured through interoperability forums with major SAN software vendors BMC, CA, IBM/Tivoli and VERITAS.

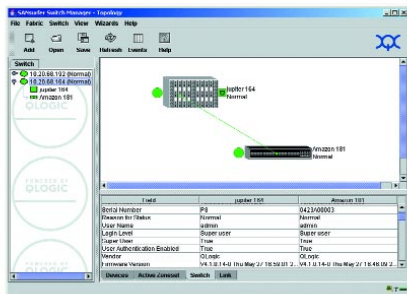
SANsurfer Switch Manager is a proven solution, used by leading OEMs (IBM, HP, SUN, EMC, and Dell) in their SAN development efforts. They rely on its stable, multigenerational design to provide comprehensive, easy-to-use configuration, management, and navigation functionalities. What's more, SANsurfer Switch Manager is complementary to your existing SAN

SANsurfer Switch Manager is offered free of charge and is available on the QLogic web site and on the SANsurfer Management Suite™ (SMS) CD-ROM, which ships with every QLogic switch and HBA. The SMS CD-ROM includes all the applications, drivers, firmware, BIOSs, documentation and resources you need to simplify installation, configuration, monitoring, diagnostics and upgrades of QLogic Switches and Host Bus Adapters (HBAs) in your SAN fabric.



Perform diagnostics and gather statistical data

<p>Select the Name Server tab to obtain:</p> <ul style="list-style-type: none"> • Target/initiator • Switch name • Switch port • FC address • Port type • Node WWN • Port WWN • Vendor • Registered FC-4 types • Active zones 	<p>Select the Switch tab to obtain:</p> <ul style="list-style-type: none"> • World Wide Name • Serial Number • Beacon Status • User Authentication • Firmware Version • IP Network Status • SNMP Enabled • Domain ID configuration • Number Of Ports • Switch Type • Operational State • FC-SW-2 Compliant • Auto Save • Zoning Default • Fan Status • Temperature • Power Supply Status 	<p>Select the Port Stats tab to obtain statistical data such as:</p> <ul style="list-style-type: none"> • Login Count /Logout • Class2 Frames • Class2 Words • Class3 Frames • Class3 Words • Decode Errors • E_Port Connections 	<p>Select the Port Info tab to obtain information on:</p> <ul style="list-style-type: none"> • Port Info • Port Address • Admin Port Type • Oper Port Type • Admin Port State • Oper Port State • Configured Admin • Port State • E Port Connection • Status • E Port Isolation Reason • MFS Mode • I/O Stream Guard • Port Speed 	<p>Select the Configured Zonesets tab to obtain switch and device information such as:</p> <ul style="list-style-type: none"> • Configured Zonesets • Zonesets zoning • Zone types • Zones in zonesets • Zones created but not in zonesets • Zoning Aliases • Member types
--	--	--	--	--



View information about QLogic switches and devices on the system

<p>Select the Name Server tab to obtain:</p> <ul style="list-style-type: none"> • Target/initiator • Switch name • Switch port • FC address • Port type • Node WWN • Port WWN • Vendor • Registered FC-4 types • Active zones 	<p>Select the Active Zonesets tab to obtain:</p> <ul style="list-style-type: none"> • Zonesets • Zone types • Zones in zonesets • Aliases in zones • Member types (WWN, Domain/Port, FC address) • Members in zones 	<p>Select the Switch tab to obtain:</p> <ul style="list-style-type: none"> • World Wide Name • Serial Number • Beacon Status • User Authentication • Firmware Version • IP Network Status • SNMP Enabled • Domain ID configuration • Number Of Ports • Switch Type • Operational State • FC-SW-2 Compliant • Auto Save • Zoning Default • Fan Status • Temperature • Power Supply Status 	<p>Select the Link tab to obtain :</p> <ul style="list-style-type: none"> • Display ISL Status
--	--	--	--

Operating System

Windows	Windows (NT, 2000 and 2003)
Solaris	2.8/2.9, CDE
Linux	Linux (RedHat 7.2), Gnome 1.4

Ordering Information

QLogic website

Download SANsurfer software, which contains the SANsurfer Switch Manager application, at www.qlogic.com

SANsurfer Management Suite CD

Ships free of charge with QLogic's FC switch channel kits



QLogic Corporation
26650 Aliso Viejo
Parkway Aliso Viejo, CA
92656 949.389.6000

QLogic (UK) Ltd.
Surrey Technology Centre
40 Occam Road Guildford
Surrey GU2 7YG UK
+44 (0)1483 295825

WWW.QLOGIC.COM

