

FIA Share2Share Replicator (S2S)

RETRIEVE DATA QUICKLY IN THE EVENT OF A SERVER FAILURE WITH SHARE2SHARE REPLICATOR FROM FIA

Share2Share Replicator (S2S) from FIA copies the contents of share folder(s) on the source POPnetserver device to one or more destination POPnetserver device(s) to provide an overall backup strategy for quick disaster recovery. S2S provides an alternative solution for online backup that allows customers to retrieve data quickly in the event of a server failure. Quick restore times mean little downtime or loss of productivity, while S2S performs behind the scenes. Best of all, S2S is integrated into the FIA POPfiler Operating System (OS), and as a result, eliminates costly end-user license fees.

Near-line and Scheduled Backups

Through LAN or the Internet, S2S provides true near-line backup that automatically detects only the changes that were made on the POPnetserver source data and performs replication immediately to the destination POPnetserver. This is accomplished without comparing the whole directory hierarchy, which can be time consuming. Also, backups can be made manually or on a scheduled basis in fixed intervals to assure your data availability needs.

One-to-Many Copy

S2S distributes content over the LAN or through the Internet as files are copied one-to-many from a central point POPnetserver to multiple remote POPnetserver locations. The synchronization of data on the POPnetserver creates a share-level copy of all files and directories onto the destination POPnetserver. Additionally, S2S supports Point-to-Point copy.

64 Simultaneous Replications

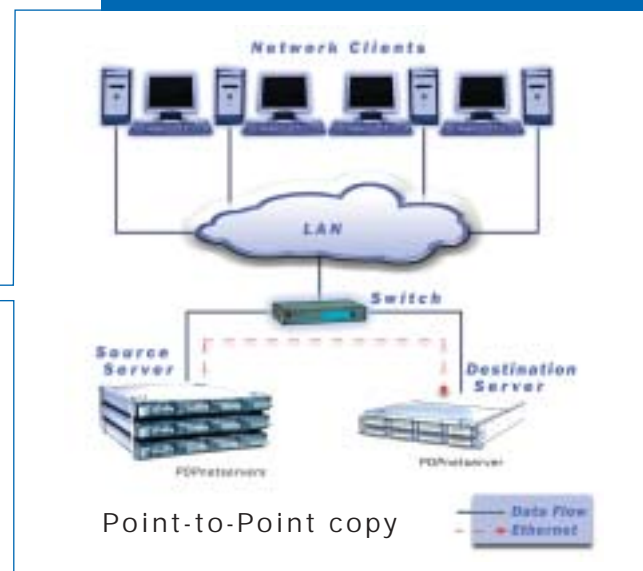
A maximum of sixteen (16) source shares can have four (4) target shares, and sixty-four (64) occurrences to provide flexible task schedules, source folders, and target machines for each entry.

Easy Setup and Configuration S2S is easy to setup and configure by using an intuitive browser-based interface for system administration. Once the configuration is completed on the source filer, the replication is set, and administrators can monitor the status remotely.

Multi-language Character Set and Heterogeneous Support S2S supports all character sets in Windows, UNIX and Apple environments.

HIGHLIGHTS

- True Near-line backups
- Scheduled backups
- One or more POPnetserver sync with one or more POPnetserver
- 64 simultaneous replications
- Multi-language character support
- Heterogeneous support for Windows, UNIX, and Apple
- Easy to setup and configure



Required Components:

Two or more POPnetserver with integrated S2S
Minimum of 256MB RAM memory

Models Supported:

These POPnetserver models ship with pre-installed FIA S2S Replicator software:

POPnetserver 4600
POPnetserver 8000



FIA, Inc., a subsidiary of WBL Corporation

903 Calle Amanecer, Suite 300, San Clemente, CA 92673

Tel: 888.353.0337 Fax: 949.940.1094

San Jose, CA Office: 408.232.0691 www.POPnetserver.com

FIA, FIA, Inc. and POPnetserver are trademarks of First Intelligent Array. All other trademarks are the property of their respective companies.